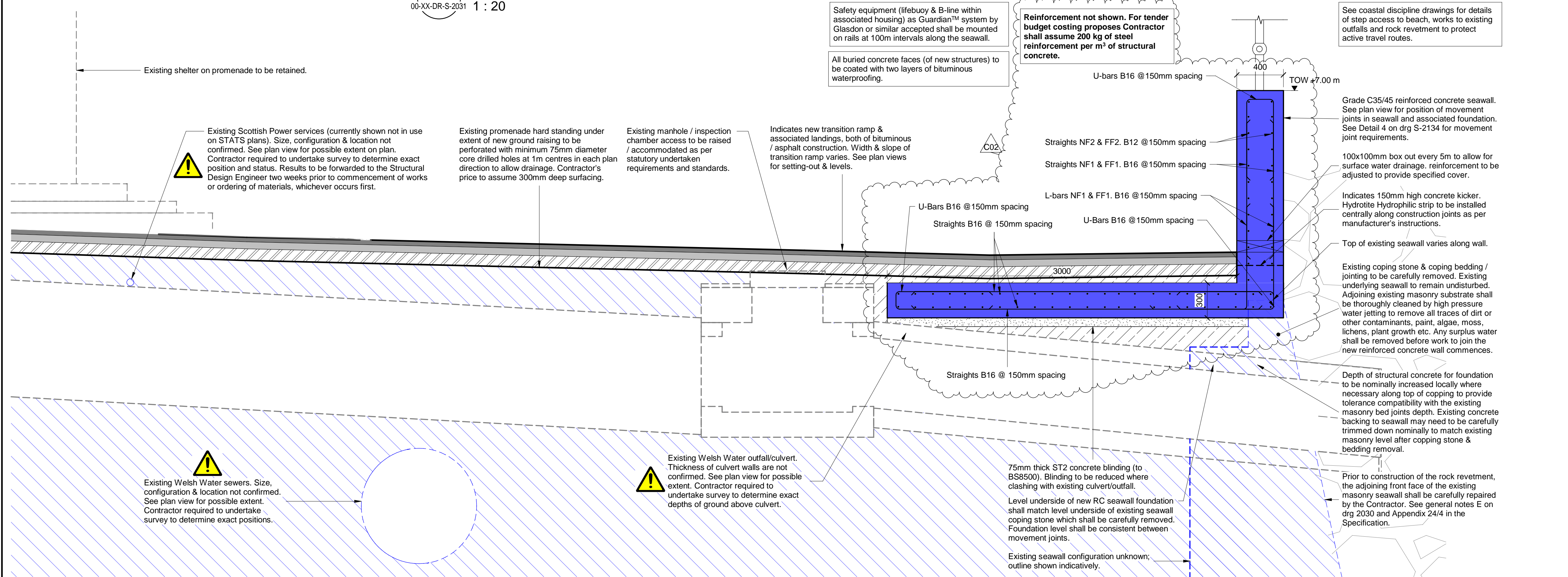


5 Typical section through lower central extent of transition ramp & associated RC seawall



6 Typical section through western extent of transition ramp, RC seawall & existing culvert

Notes					
1. For general notes see drawing 415437-MMD-00-XX-DR-S-2030.					
2. Access to all affected in-use manholes draw pits, gullies, inspection chambers etc to be raised; " # " on Plan View denotes possible affected apparatus.					
3. See 415437-MMD-00-XX-DR-C-3500 series of drawings for coastal discipline information.					
4. Top of concrete foundations to be nominally below underside of surface course. Surface directly under bin or bench to be flat and level.					
5. Typical indicative reinforcement bars shown. Final arrangement to be detailed in RC drawings and schedules.					
<div><div></div><div>RESIDUAL RISKS:<ul style="list-style-type: none">Damage to existing services infrastructure during excavations.Damage to existing seawalls during undertaking seawall repairs, construction of rock revetment, edge restraint installation, raised seawalls, flood door support structure and raised promenade.Unknown ground conditions or obstructions below existing ground. See Foundations Note B1 on dwg 2031 for information.Collapse of structures due to possible voids under the existing prom.Collapse of structures during construction. New RC structures along promenade seaward edge not to be constructed nor the promenade raised until the new rock revetment is constructed to the existing promenade level. Rock revetment to be constructed to rest against the seawall.Working at height, e.g. along promenade seaward edge.</div></div>					
Key to symbols					
<div><div></div>Existing terrain / structures.</div> <div><div></div>Proposed reinforced concrete - Wall Type 3.</div> <div><div></div>Proposed reinforced concrete - Wall Type 5.</div> <div><div></div>Proposed concrete blinding / mass concrete.</div> <div><div></div>Class 6N compacted granular fill to Series 600 Volume 1 Specification for Highway Works.</div> <div><div></div>Class 6N or 6F2 compacted granular fill to Specification for Highway Works.</div> <div><div></div>Rock revetment</div>					
Reference drawings					
415437-MMD-00-XX-DR-S-2030 series for prom general arrangement plans 415437-MMD-00-XX-DR-S-2130 series for prom sections & details					
C02	29.01.2026	RW	Tender Issue - Indicative rebar added	GWM	SS
C01	21.01.2026	RW	Tender Issue	GWM	SS
P1	13.01.2026	RW	Tender Issue for Client Acceptance	GWM	SS
Rev	Date	Drawn	Description	Ch'k'd	App'd
Status Stamp					
Tender Issue					
<div><div><div>M</div><div>M</div><div>MOTT</div><div>MACDONALD</div></div><div>First Floor, Bryn Eirias Abergele Road Colwyn Bay LL29 8BY United Kingdom T +44 (0)1492 534601 W mottmac.com</div></div>					
Client					
<div><div></div><div>CONWY CYNGOR BWRDEISTREF SIROL COUNTY BOROUGH COUNCIL</div></div>					
Title					
Ph.3 - Old Colwyn Promenade Coastal Defence & Active Travel Improvements PROMENADE SECTIONS & DETAILS					
Designed	R. Williams		Eng. Check	G. Mitchell	
Drawn	R. Williams		Coordination	G. Mitchell	
Dwg. Check	G. Mitchell		Approved	S. Smith	
MMD Project Number		Scale at A1		Security	
415437		As indicated		STD	
Suitability Description				Suit. Code	
Tender Issue				A4	
Drawing Number				Rev	
415437-MMD-00-XX-DR-S-2131				C02	